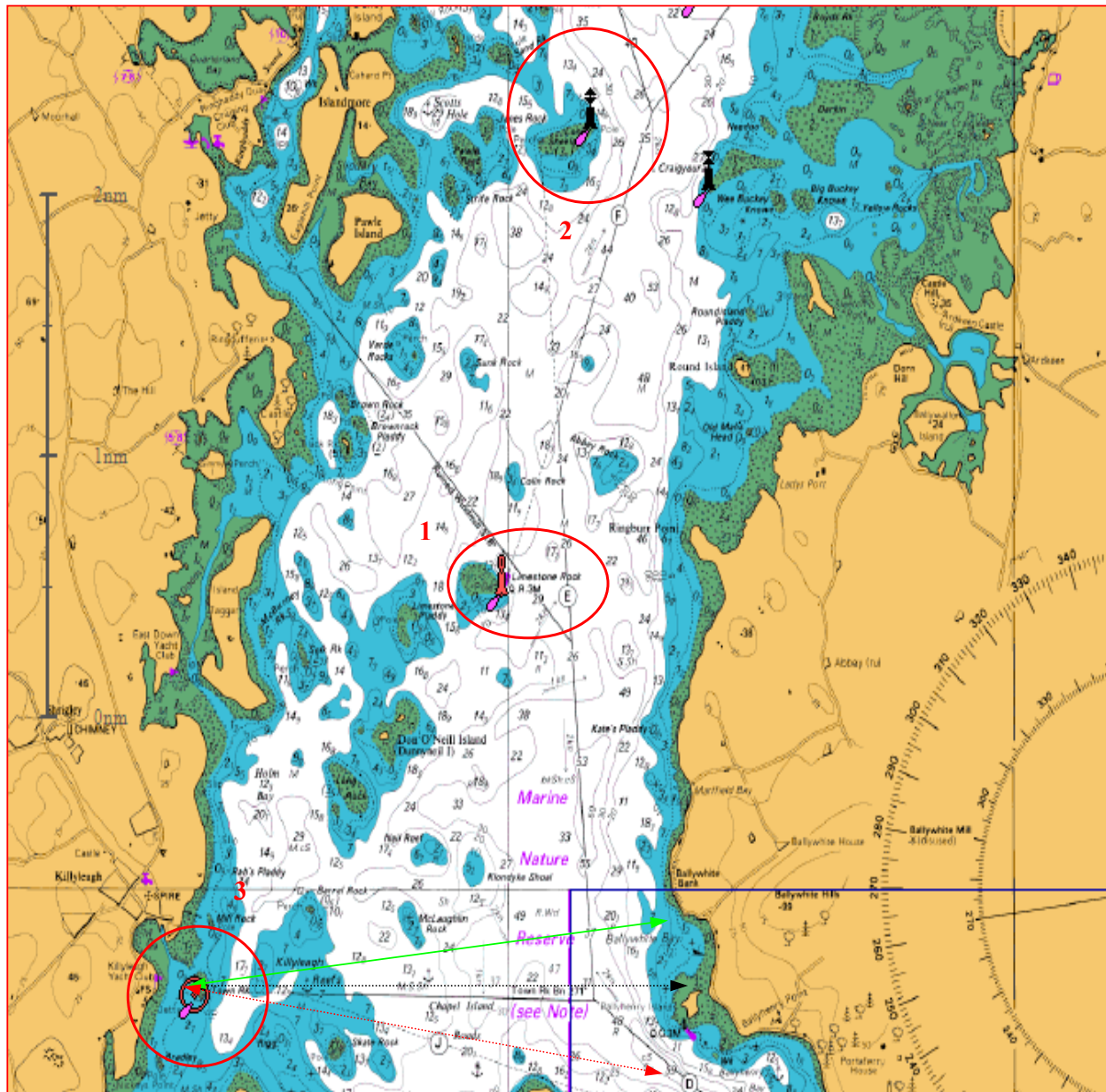
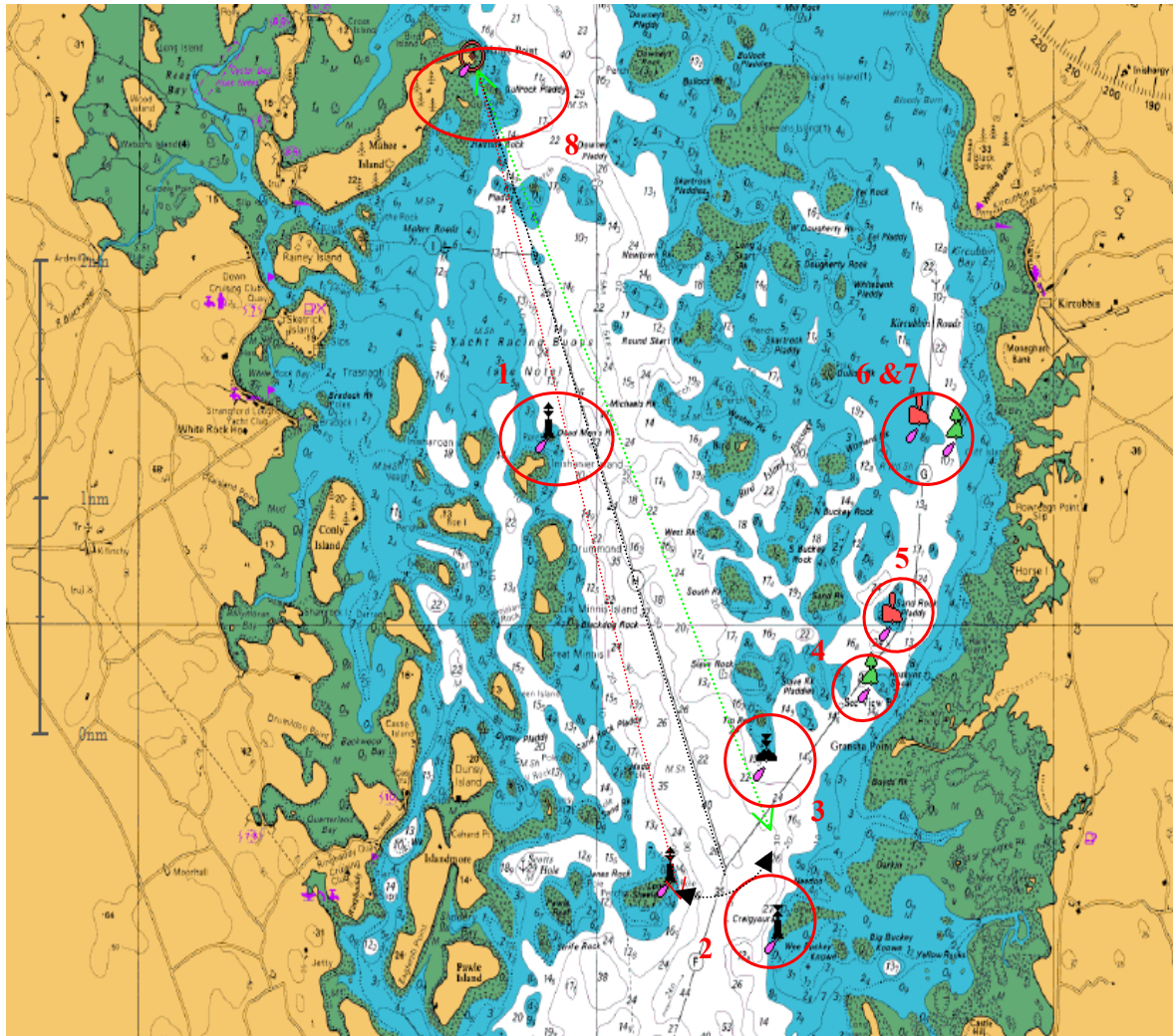


Statutory Sanction – Down District Council - Strangford Lough – New Aids



	Name	Type	Light
1	Limestone Rock	Lateral Beacon-Port hand	Q.R.
2	Long Sheelagh	Beacon – East Cardinal	QFL(3) 10s
3	Town Rock	Beacon with Sectored light Centred on 270°	Fl(2)WRG 5s Green 262.5° ~ 268.5° (6°) White 268.5° ~ 271.5° (3°) Red 271.5° ~ 277.5° (6°)

Statutory Sanction – Ards Borough Council – Strangford Lough – New Aids



No	Name	Type	Light
1	Dead Man's Rock	Beacon – East cardinal	Q(3) 10s
2	Craigyouran	Beacon – West Cardinal	Q(9) 15s
3	Kircubbin Approaches – Tip Reef	Buoy – South Cardinal	Q(6)+LFL 15s
4	Kircubbin Approaches – Hoskyns Shoal	Buoy – Stbd Hand lateral	Fl.G.5s
5	Kircubbin Approaches – Sand Rock Pladdy	Buoy – Port Hand lateral	Fl.R.5s
6	Kircubbin Approaches – Kircubbin Roads (S)	Buoy – Stbd Hand lateral	Fl(2).G.8s
7	Kircubbin Approaches – Kircubbin Roads (P)	Buoy – Port hand Lateral	Fl(2).R.8s
8	Mahee Point	Beacon – with Sectored light Centred on 339°	LFL.WRG.8s Green 334.5°~337.5° (3°) White 337.5°~340.5° (3°) Red 340.5°~343.5° (3°)