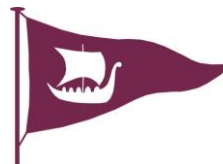


EAST DOWN YACHT CLUB

OFFICERS:

Commodore
Vice-Commodore
Hon Secretary
Sailing Captain

Graham Wright
Margie Crawford
Alan Wood
Rebecca Jeffery



REGATTA

Saturday 13th August 2016

Race Officer: Trevor Fisher
First start: 1300 hrs
Tide Information - Killyleagh:

Time	Height	
03:39	1.2	
09:32	2.9	HW
16:02	1.1	
21:07	2.9	HW

Supplementary Sailing Instructions ISSUE 3

Preface to issue 2

A revised schedule of races is the change from Issue 1 to Issue 2 – thus everyone should check their start times from Issue 2. Most starts have been changed to 5 mns later.

Preface to Issue 3

The dinghy handicap split has been changed between large dinghies and small dinghies following the split used at other lough regattas. Further information at the document end has also been added

1. NOTICE

These Supplementary Sailing Instructions also available on the EDYC website (<http://www.edyc.co.uk/>) shall be read in conjunction with the Notice of Races and General Sailing Instructions for Strangford Lough Regattas 2016 as published.

2. SCHEDULE OF RACES, Class flags and Course Codes:

See page 4

3. CHART OF MARKS, showing approximate position:

See page 5

4. START

The starting line shall be between the red/white pole on the Committee Boat and a yellow buoy **Mark "S"** (letter "S" in black).

5. FINISH

A separate finish line shall be between the red/white pole on the committee boat and a yellow buoy **Mark "F"** (letter "F" in black).

6. INTERVENING ROUNDS

All competitors shall pass between the Committee Boat including any limit mark

and yellow buoy **Mark “F”** or be recorded DNF and no request for redress will be considered, this changes RRS 63.1.

7. COURSE DETAILS AND METHOD OF DISPLAY

Courses shall be displayed on boards from the Committee Boat. The appropriate course code for each class is specified in the table of start times for classes attached to these SSIs.

The boards will be ordered as follows:

Reading from **left to right**

Course code letter

Marks to be **rounded** – **red** numbers leave mark to Port, **green** numbers leave mark to Starboard.

Number of rounds to be sailed – black number on a white background

Marks X and Y are small marks in Holm Bay (see chart), which may be used for Dinghy and small keelboat class courses.

All boats shall keep to seaward of Mark 2 and Mark 6 unless displayed as a mark of that course.

All boats shall pass North of Marks “R” and “K” off Skate Rock.

8. PROVISION FOR SHORTENING COURSES

By flying Code Flag “S” above the class code flag at the beginning of the round to be shortened and displaying the new course on the course board. Races may be finished at any mark of the course by a boat flying a blue flag with the appropriate class flag/s and with suitable sound signals.

9. VALIDITY OF RACES

A race other than for IRC Yachts TCC 0.949 and under, shall be valid if two or more yachts start correctly in a scheduled race. Any yachts not catered for under SLRC SI 12 and for which there is no scheduled class are invited to compete in the appropriate scheduled handicap class upon declaring their intention and handicap to the Race Officer before the start of the race.

10. PROTESTS

Protests shall be lodged not more than one hour after the finish time of the last boat in the classes concerned. Lodge the protest with personnel at the kitchen of the EDYC clubhouse, who will register the time of receipt.

11. TIME LIMIT

Any yacht not finishing by 1700 hrs shall be scored as DNF.

12. PRIZES

A prize shall be awarded to the winning yacht in each valid race. In the class “Dinghy Handicap PYS 1131 & over” a prize will be awarded to the first Topper and first RS Feva if 4 or more Toppers and 4 or more Fevas respectively start and a different type of boat wins on handicap.

13. CHANGES TO THE SAILING INSTRUCTIONS

Changes to the Supplementary Sailing Instructions may be made up to one hour prior to the start of each class and shall be posted on the EDYC notice board in the clubhouse (usually the window of the McRobert Room).

14. RISK STATEMENT

Rule 4 of the Racing Rules of Sailing states: “The responsibility for a boat’s decision to participate in a race or to continue racing is hers alone.”

Sailing is by its nature an unpredictable sport and therefore involves an element of risk. By taking part in the event, each competitor agrees and acknowledges that:

- a. They are aware of the inherent element of risk involved in the sport and accept responsibility for the exposure of themselves, their crew and their boat to such inherent risk whilst taking part in the event;
- b. They are responsible for the safety of themselves, their crew, their boat and their other property whether afloat or ashore;
- c. They accept responsibility for any injury, damage or loss to the extent caused by their own actions or omissions;
- d. Their boat is in good order, equipped to sail in the event and they are fit to participate;
- e. The provision of a race management team, patrol boats, umpires and other officials and volunteers by the organiser does not relieve them of their own responsibilities;
- f. The provision of patrol boat cover is limited to such assistance, particularly in extreme weather conditions, as can be practically provided in the circumstances;
- g. Their boat is adequately insured, with cover against third party claims.

EAST DOWN YACHT CLUB REGATTA

Saturday 13 August 2016

First start: 1300 hrs

Time Limit: 1700 hrs

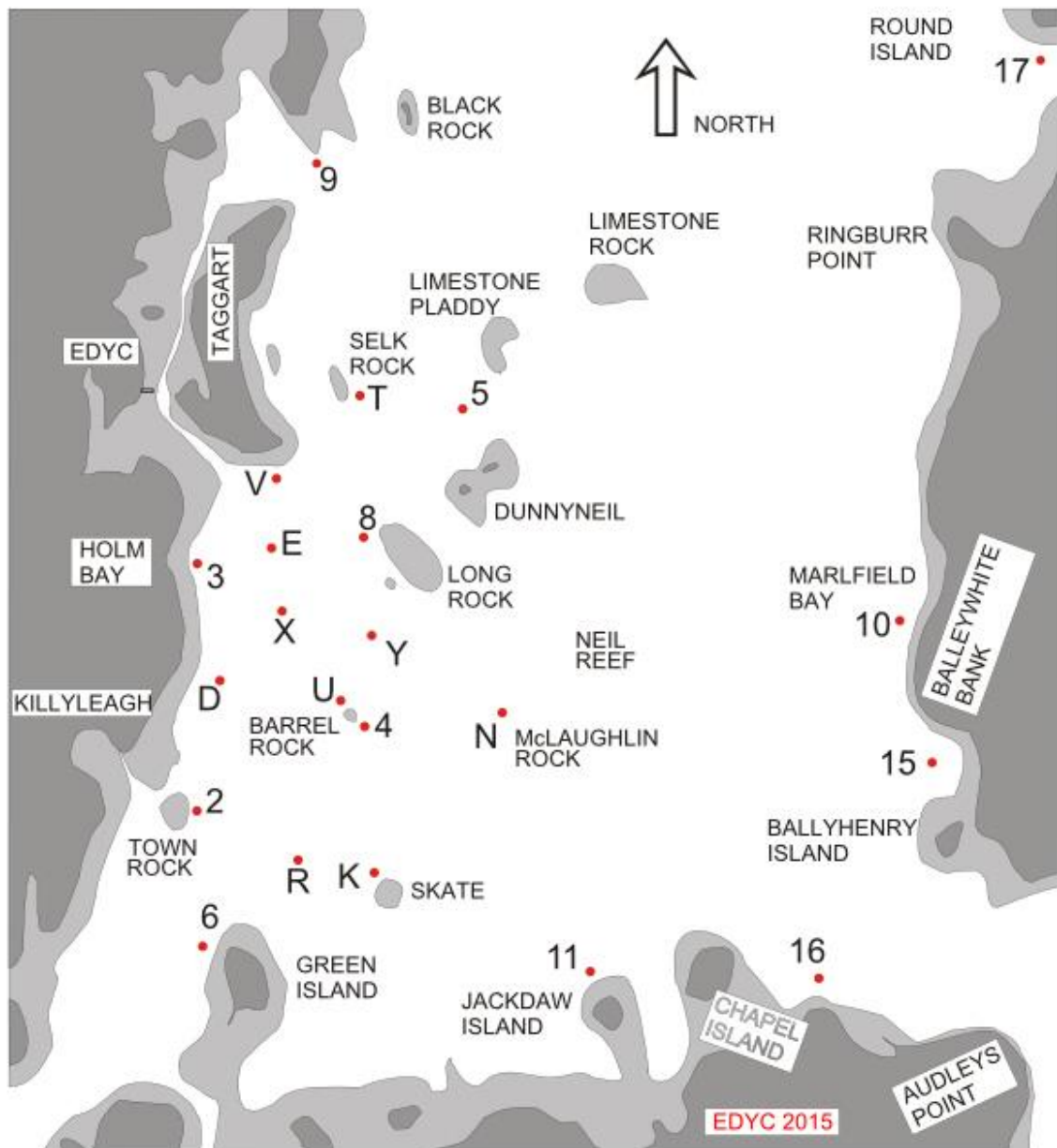
Tide Information Killyleagh:

Time	Height	
03:39	1.2	
09:32	2.9	HW
16:02	1.1	
21:07	2.9	HW

Issue 2 Schedule of Races

RACE PROGRAMME, CLASS FLAGS AND COURSE CODES				
Race No	Start	Class	Class Flag	Course code letter
1	1300	Cruiser IRC 0.950 & over	Numeral 1	A
2	1305	Cruiser IRC 0.949 & under	Numeral 2	B
3	1310	Cruiser NHC 1	Numeral 4	B
4	1315	Flying Fifteen	A	C
5	1320	Cruiser NHC 2	Numeral 5	C
& 6		Sonata	Numeral 6	C
7	1325	Cruiser NHC 1 Restricted Sail	Numeral 7	C
8	1330	River	R	D
9	1335	Glen	G	D
10	1340	Cruiser NHC 2 Restricted Sail	Numeral 3	D
11	1345	Squib	E	E
12	1350	Leisure 17	B	E
13	1355	Wayfarer	W	E
14	1400	Dinghy Handicap PYS 1134 & under	J	E
15	1405	Dinghy Handicap PYS 1135 & over	V	F

POSITION OF CLUB RACING MARKS



This sketch is intended only to indicate the approximate normal location of the racing marks used by EDYC. It is not suitable for navigation purposes and is not to scale. A copy may be downloaded from www.edyc.co.uk

INFORMATION:

INSTRUCTIONS TO SAFETY AND RESCUE CREWS

Safety boats should liaise with the EDYC Safety Officer on the Committee Boat prior to commencement of racing using VHF channel 37.

Prize giving and refreshments:

All competitors, their families and friends are invited to refreshments in the EDYC Clubhouse after racing, followed by the award of prizes.

Visitors are most welcome to join members for the evening entertainment and BBQ. Our local butcher Alfie will be present at the club and will be able to supply a range of meats including a BBQ pack. Check our WEB site for further details close to the event date.

Club pontoon:

Boats may dock and raft up at the club pontoon.

Ferrying:

After racing, safety boats are requested to assist in ferrying crew to and from the EDYC Club pontoon and yachts in Holm Bay and the Dorn, where possible. The Dorn will be shallowest at 16:02

Youth Event

On the Sunday following the regatta EDYC will host a lough youth event - more details and times via the EDYC WEB site

Telephone

EDYC have a clubhouse phone for incoming calls and the number is 028 4482 8375. A member - Keith Maxwell - phone 07816 540 534 has offered to take calls as well. Both numbers are not manned on a 24 by 7 basis.

END