

Pre season Club conference  
including  
what you must know to race.  
Wednesday 28<sup>th</sup> April at 19:30 Zoom.

# Preamble – while gathering in zoom

- Demo of the club website
  - Search
  - Downloads section

## Covers:-

Basics

Boat names, sail numbers

Handicap systems PY, IRC and NHC

Plus one design classes, L17, W and Impala

Race organisation inc calendar - NoR

The volunteer team

Safety – club rules

Starts and flags – Via SIs

RO guide booklet – work through

Covid impacts

Prizes

Basics – self help club inc DIY- friendly ask advice

Boat names, sail numbers

### **Abstract from Club Rules**

#### **49. (a) *Equipment/Property Identification***

The club instructs that every boat, tender, trailer, trolley, caravan or piece of equipment at EDYC (above the size of and including optimist dinghy) shall be marked legibly with an identification name and that this identification name be recorded on the member's annual membership renewal census form or given to the secretary before the equipment's entry to EDYC property. The identification name may include the boat class and sail number e.g. W6657 & T44956.

Equipment without identification so registered will be treated under rule 49b

#### **(b) *Abandoned Property***

Any property on the Club site which has no visible identification or whose owner cannot, after reasonable enquiry, be identified, shall be disposed of at the discretion of the Executive Committee.

Mooring buoys must be named – very important

Insurance £3 Million – develop reasons

Handicap systems PY, IRC and NHC – introduce and outline

Plus one design classes, L17, W and Impala

Race organisation inc calendar – NoR & Sis  
Calendar overview with club fit

The whole volunteer team

Marks & committee boat/RO briefcase

RO

Safety Boat

Chevvy (Covid impact)

Results

## Safety – club rules and SIs

### **15 SAFETY**

15.1 All Dinghy 1 and Dinghy 2 class boats must fulfil class rules concerning buoyancy, means for bailing, towropes and means of manual propulsion (paddles).

15.2. RRS 40 is amended to read: All dinghy sailors must wear an adequate personal flotation device while racing. Wetsuits and drysuits are not personal flotation devices.

15.3 All keelboats must carry the following safety equipment while racing: Engine (in-board or out-board), fuel for 1 hour motoring, sail number on mainsail, fire extinguisher, bucket and lanyard, warp (2 x LOA of boat), torch, adequate anchor and warp, foghorn, personal floatation devices for all crew members and First Aid equipment.

15.4 Boats must accept help if so directed by a safety crew. Non-acceptance of such help shall result in disqualification.

Starts and flags – Via Sis  
following

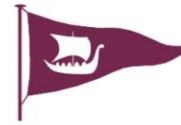
RO guide booklet – this would be a lengthy work  
through

There will normally be a committee vessel start with a laid line  
utilising a mark E as the line end mark.

7.2 The courses to be sailed by the classes shall be indicated by  
course letters being displayed in the following positions on the  
Committee signalling vessel

<b>Class</b>	<b>Position</b>
Cruiser 1	port side, forward.
Cruiser 2	port side, aft.
<b>Cruiser RS</b>	<b>As above (C2)</b>
Leisure 17	starboard side cabin
Dinghy 1	starboard side, forward
Dinghy 2	starboard side, aft



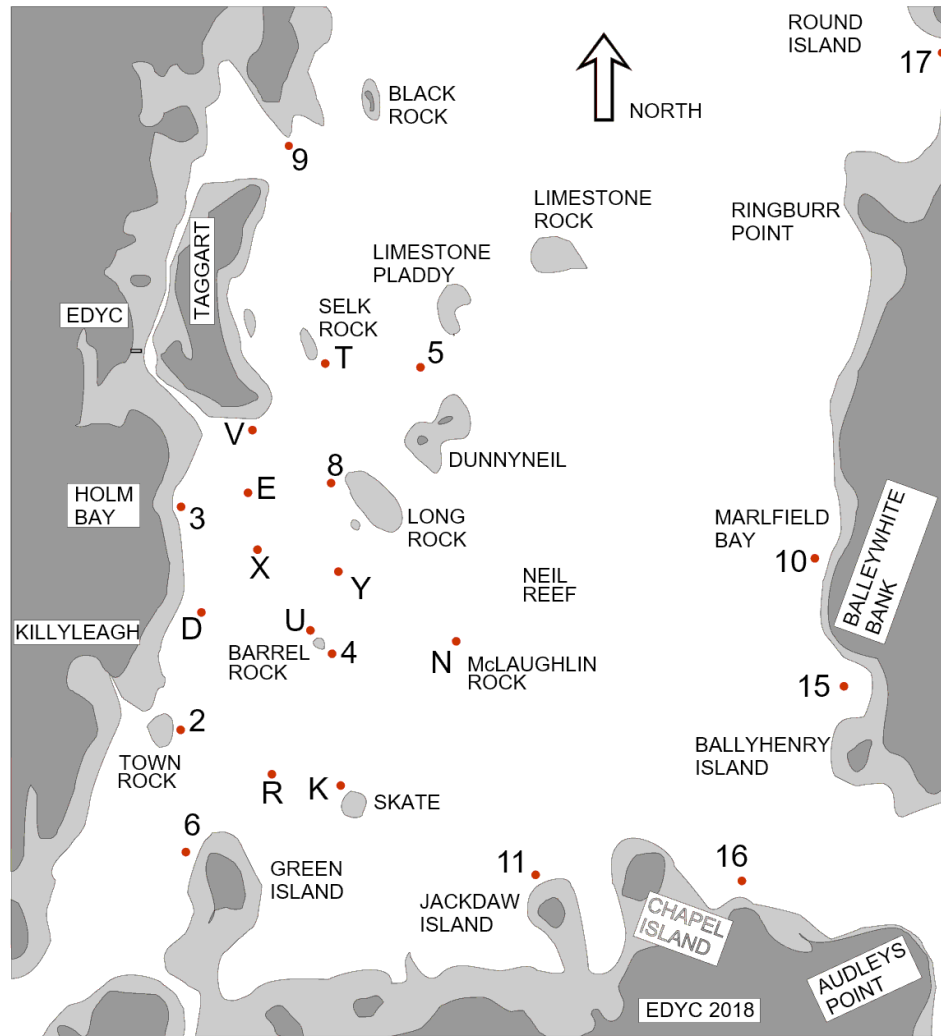


## Club Racing Courses

## The course selection

course code	wind Direction	marks to course	changed course							
AA	N	varies	9s	10s	2s	Up	Ts	Ns	2s	Up
AB	N	Star	9	N	2		T	N	2	
AC	N	Star	T	N	6		T	U	D	
AD	N	Star	T	N	D		T	8	X	
AE	N	Star	V	8	U	D	V	8	X	
AF	VARIABLES		R O instructs							
<hr/>										
BA	NE	Star	5	N	2		5	U	3	
BB	NE	Star	8	U	3		8	3		
<hr/>										
CA	E	Star	10	11	3		5	U	3	
CB	E	Star	5	N	3		5	3		
CC	E	Star	Y	2	3		Y	D	3	Dinghy only
<hr/>										
DA	SE	Port	11	10	T		N	5	T	
DB	SE	Port	11	5	V		5	V		
DC	SE	Port	N	5	V		U	5	V	
DD	SE	Port	X	8	V					
<hr/>										
EA	S	varies	Us	2p	10p	9p	Us	2p	Np	Tp
EB	S	Port	6	N	T		U	T		
EC	S	Port	U	8	T		X	8	V	
ED	S	Port	X	8	V					
<hr/>										
FA	SW	Port	2	11	5		2	N	5	
FB	SW	Port	2	N	5		2	U	8	
FC	SW	Port	D	U	8					Dinghy only
<hr/>										
GA	W	Port	3	11	10		3	U	T	
GB	W	Port	3	N	5		3	5		
GC	W	Port	3	N						
GD	W	Port	3	2	Y		3	D	Y	Dinghy only
<hr/>										
HA	NW	Star	V	10	11		V	N	U	
HB	NW	Star	V	5	11		V	5	N	
HC	NW	Star	V	5	N		V	5	U	
HD	NW	Star	V	8	X					Dinghy only

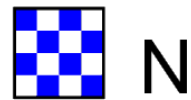
# MARKS FOR EDYC CLUB RACING



This sketch is intended only to indicate the approximate normal location of the racing marks used by EDYC. It is not suitable for navigation purposes and is not to scale.

A copy may be downloaded from [www.edyc.co.uk](http://www.edyc.co.uk)

# EDYC RO FLAG SIGNALS 2021



# Further flags – RO use



**X** INDIVIDUAL RECALL



FIRST SUBS - GENERAL RECALL



**C** FLAG C - CHANGE COURSE (+ CLASS FLAG)



**S** FLAG S - STOP (+ CLASS FLAG)



BLUE FLAG - COMMITTEE VESSEL IN POSITION  
AT THE FINISH LINE



PROTEST FLAG



**V** Monitor communications channel for safety instructions.

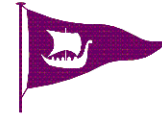
11 Apr 21

1



N

On main flagstaff - No racing - all races abandoned



2



On main flagstaff - No Dinghy 1 , L17 and Dinghy 2 racing - these races abandoned



3



H

4



On Committee boat or any vessel near a mark of the course  
This flag is one end of the finish line.



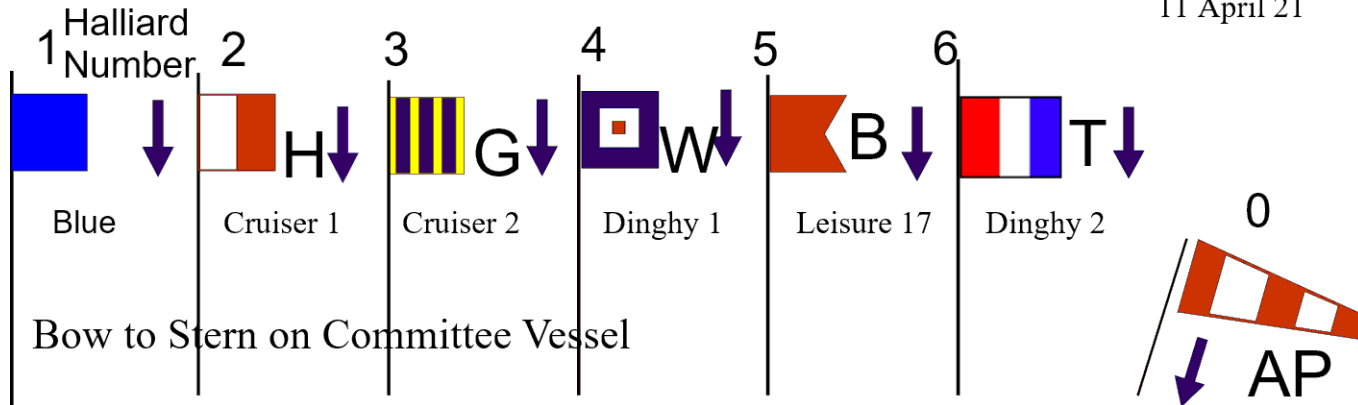
Stop (S or a blue flag)



For L17 - stop at this boat

# EDYC 2021 RO FLAG CHART STARTS

11 April 21



Warning Signal Times and Start Times

Ref - SI 5 and 6

SAT	WED	
14:17	19:17	Sequence start AP lowered
14:20	19:20	CRUISER 1 warning Blue lowered
14:23	19:23	CRUISER 1 start CRUISER 2 warning H lowered
14:26	19:26	CRUISER 2 start DINGHY I WARNING G lowered
14:29	19:29	DINGHY I start L17 warning W lowered
14:32	19:32	L17 START Dinghy II warning B lowered
14:35	19:35	Dinghy 2 start T lowered

## Covid impacts

Site

Committee Boat manning

Safety Boat manning

Competitors must comply with legislation in force. Current advice available on RYANI website

<https://www.rya.org.uk/rya-regions/rya-ni/knowledge-base/Pages/COVID-19-Informaton.aspx>

## Prizes

Follow up more info etc - generally just ask

Training can be provided on all aspects of club activity

Race Training

RO Training

Powerboat, Safety boat and RIB driving

Many other aspects

Follow up information – just ask

Links to explain the handicap systems

NHC for Cruisers

<https://www.rya.org.uk/SiteCollectionDocuments/technical/Web%20Documents/NHC/RuleandGuidance%202015.pdf>

Portsmouth Yardstick

<https://www.rya.org.uk/racing/Pages/portsmouthyardstick.aspx>

IRC rating rule

<https://ircrating.org/irc-certificate/what-is-irc/>