



EDYC club conference on race involvement

Pre season

what you must know to race and assist
races.

**Wed, Thur, 13 & 14 April 22 at
19:30 Zoom.**



EDYC Conference Covers:-

Basics

- The Fundamental Rules
- EDYC not the Olympics
- Safety – club rules
- Self policing

Club Race organisation inc calendar - NoR

- The volunteer team
- Your timetable
- Starts and flags – Via SIs
- RO Race Officer guide booklet – work through
- Covid impacts - some headings
- Results presentation and year end Prizes



Principles

 <p>Fair Racing Competitors agree to race fairly; organisers and officials agree to provide fair racing; support persons agree to encourage fair racing and uphold the principles of this Charter.</p>	 <p>Fair Resolution Disputes will be addressed in a timely and proper manner by those responsible; parties involved will use established tools for achieving a fair resolution.</p>
<p>Foul, abusive, aggressive and discriminatory language or behaviour, or a lack of respect for others and their property, will not be tolerated.</p> <p>Respect</p> 	<p>Those who take unfair advantage of sailing's self-policing nature, or behave inappropriately, can expect action to be taken against them.</p> <p>Accountability</p> 

Why?

- Ensures sailboat racing is **fair, welcoming and inclusive to all**
- Provides a framework for all-round **enjoyment**
- Encourages **life long** sailboat racing


RYA Racing charter

<https://www.rya.org.uk/racing/rules/racing-charter>

A link to the RRS

<https://www.sailing.org/inside-world-sailing/rules-regulations/racing-rules-of-sailing/>

In Practice

<p>What YOU should expect</p> <ul style="list-style-type: none"> Racing that is inclusive, fair, enjoyable and safe. Facilities, organisation and race management of acceptable standards and appropriate to the event. Opportunities to give feedback. Prompt resolution of any disputes. 	 <p>What is expected of YOU</p> <ul style="list-style-type: none"> Courtesy and respect to other competitors, officials and other water users, both afloat and ashore. Compliance with rules; taking a penalty when required by the rules. Use of provided tools to resolve any disputes.
---	---

The RYA encourages the use of the following tools...

for the resolution of Racing Disputes:				for Unacceptable Behaviour:	
Post-Race Penalty	Advisory Hearings	RYA Arbitration	Protest Hearings	Rule 2 Protest	Rule 69 Hearing





- Mooring buoys must be named – very important
- Insurance £3 Million – develop reasons
This includes punts, canoes/kayaks to be insured
- Handicap systems PY, IRC and NHC – introduce and outline
- Plus one design classes, L17, W and Impala



Safety – club rules and SIs

15 SAFETY

- **15.1** All Dinghy 1 and Dinghy 2 class boats must fulfil class rules concerning buoyancy, means for bailing, towropes and means of manual propulsion (paddles).
- **15.2.** RRS 40 is amended to read: All dinghy sailors must wear an adequate personal flotation device while racing. Wetsuits and drysuits are not personal flotation devices.
- **15.3** All keelboats must carry the following safety equipment while racing: Engine (in-board or out-board), fuel for 1 hour motoring, sail number on mainsail, fire extinguisher, bucket and lanyard, warp (2 x LOA of boat), torch, adequate anchor and warp, foghorn, personal floatation devices for all crew members and First Aid equipment.
- **15.4** Boats must accept help if so directed by a safety crew. Non-acceptance of such help shall result in disqualification.

The course selection

OLD

Available in EDYC
downloads

course code	wind Direction	marks to course	changed course
AA	N	varies	9s 10s 2s Up Ts Ns 2s Up
AB	N	Star	9 N 2 T N 2
AC	N	Star	T N 6 T U D
AD	N	Star	T N D T 8 X
AE	N	Star	V 8 U D V 8 X
AF	VARIABLES		R O instructs
<hr/>			
BA	NE	Star	5 N 2 5 U 3
BB	NE	Star	8 U 3 8 3
<hr/>			
CA	E	Star	10 11 3 5 U 3
CB	E	Star	5 N 3 5 3
CC	E	Star	Y 2 3 Y D 3 Dinghy only
<hr/>			
DA	SE	Port	11 10 T N 5 T
DB	SE	Port	11 5 V 5 V
DC	SE	Port	N 5 V U 5 V
DD	SE	Port	X 8 V
<hr/>			
EA	S	varies	Us 2p 10p 9p Us 2p Np Tp
EB	S	Port	6 N T U T
EC	S	Port	U 8 T X 8 V
ED	S	Port	X 8 V
<hr/>			
FA	SW	Port	2 11 5 2 N 5
FB	SW	Port	2 N 5 2 U 8
FC	SW	Port	D U 8 Dinghy only
<hr/>			
GA	W	Port	3 11 10 3 U T
GB	W	Port	3 N 5 3 5
GC	W	Port	3 N
GD	W	Port	3 2 Y 3 D Y Dinghy only
<hr/>			
HA	NW	Star	V 10 11 V N U
HB	NW	Star	V 5 11 V 5 N
HC	NW	Star	V 5 N V 5 U
HD	NW	Star	V 8 X Dinghy only



EAST DOWN YACHT CLUB

Club Racing Courses

Final 11 April 22 changes from 21 highlighted

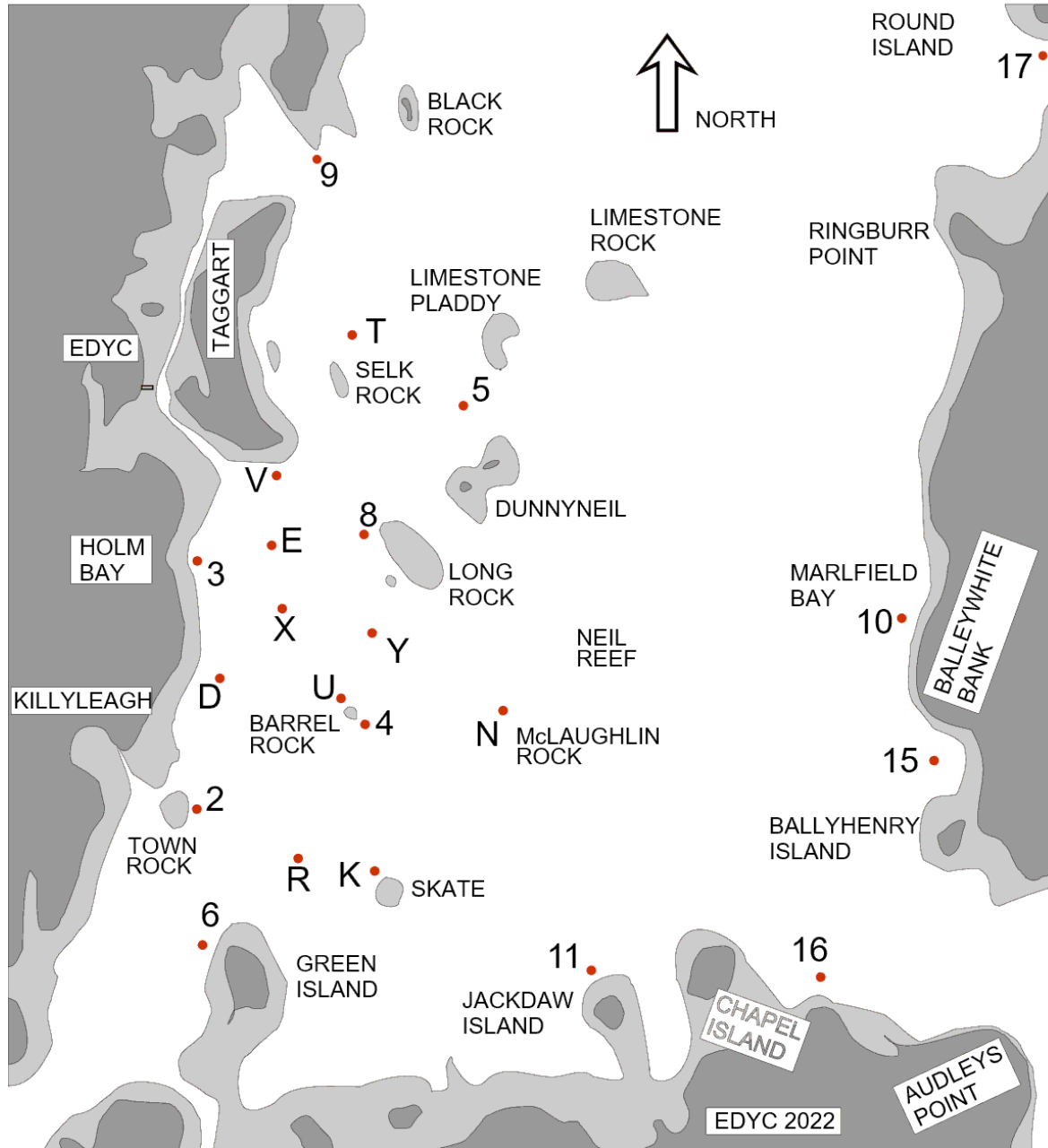
course code	wind Direction	leave marks to	course	shortened course	
AA	N	varies	9s 10s 2s Up	Ts Ns 2s Up	
AB	N	Star	9 N 2	T N 2	
AC	N	Star	T N 6	T U D	
AD	N	Star	T N D	T 8 X	
AE	N	Star	V 8 U D	V 8 X	
AF	VARIABLES		R O instructs		
BA	NE	Star	5 N 2	5 U 3	
BB	NE	Star	8 U 3	8 3	
CA	E	star	10 11 3	5 U 3	
CB	E	star	5 N 3	5 3	
CC	E	star	N 3	Y D 3	Dinghy only
DA	SE	Port	11 10 T	N 5 T	
DB	SE	Port	11 5 V	5 V	
DC	SE	Port	N 5 V	U 5 V	
DD	SE	Port	X 8 V		
EA	S	varies	Us 2p 10p 9p	Us 2p Np Tp	
EB	S	Port	6 N T	U T	
EC	S	Port	U 8 T	X 8 V	
ED	S	Port	X 8 V		
FA	SW	Port	2 11 5	2 N 5	
FB	SW	Port	2 N 5	2 U 8	
FC	SW	Port	D U 8		Dinghy only
GA	W	Port	3 11 10	3 U T	
GB	W	Port	3 N 5	3 X 5	
GC	W	Port	3 N		
GD	W	Port	3 U 8	3 D Y	Dinghy only
HA	NW	Star	V 10 11	V N U	
HB	NW	Star	V 5 11	V 5 N	
HC	NW	Star	V 5 N	V 5 U	
HD	NW	Star	V 8 X		Dinghy only

Available in
EDYC
downloads

MARKS FOR EDYC CLUB RACING



Available
in EDYC
downloads





A Cruiser 1 competitor timetable

Sat	Wed
13:30	18:30 use tender and go out to moored boat
14:00	19:00 Sails prepared go to Start Area – tune rig
14:17	19:17 Sequence start (first flag) X lowered
14:20	19:20 Cruiser 1 warning
14:23	19:23 Cruiser 1 Start
14:26	19:26 Cruiser 2 Start,
14:29	19:29 Dinghy 1 Wayfarer Start (13:45 2nd Rce)
14:32	19:32 Leisure 17 Start
14:35	19:35 Dinghy 2 Start



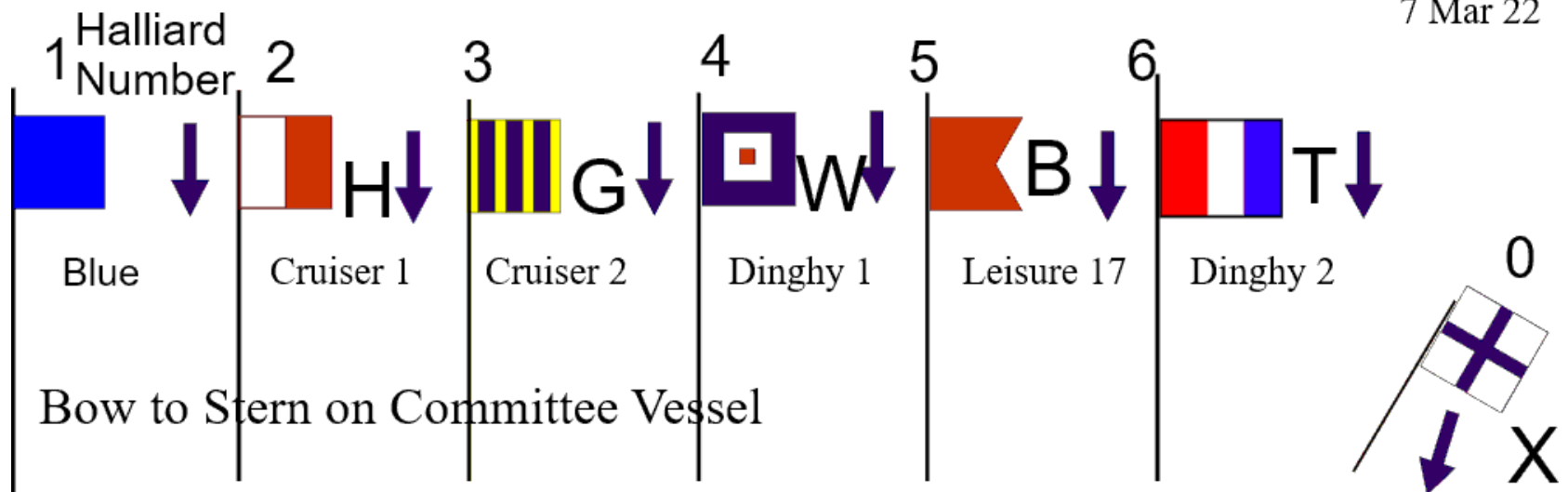
A Dinghy 1 competitor timetable

Sat	Wed
13:00	18:00 Get cover off boat, boat to top of slip
13:15	18:15 Start Changing
13:30	18:30 Leave Slip
14:00	19:00 Arrive Start Area
14:17....	19:17 X lowered indicating sequence commencing in 3 mn
14:20	19:20 Cru 1 warning
14:23	19:23 Cru 1 start
14:26	19:26 Cruiser 2 Start
14:29	19:29 Dinghy 1 Wayfarer Start
14:32	19:32 Leisure 17 Start
14:35	19:35 Dinghy 2 Start



EDYC 2022 RO FLAG CHART STARTS

7 Mar 22



Additional flags



X INDIVIDUAL RECALL



FIRST SUBS - GENERAL RECALL



V

Now means be alert for communication of Search and Rescue Instructions



AP POSTPONEMENT



Flag C - change - course change



Auto hoot – very simple to use
Hoots at 3 mn intervals when turned on

What happened when something goes wrong ?

In relation to your boat or crew



- Breakages/omissions accidents – own steam
- Especially if a cruiser – remedy the problem without safety boat
- Injury – assistance – club assistance
 - External assistance – Mayday – see next slide
- Scoop and run – get personnel to shore
 - Collisions
 - Grounding
 - Capsise

15.4 Boats must accept help if so directed by a safety crew. Non-acceptance of such help shall result in disqualification.

This Mayday card is for you to download and modify. Click 'File' and 'Save as' Word document. Keep it by your VHF.

Note that VHF DSC procedures vary between manufacturers; check the instructions for your own set. All use is at your own discretion.



**MAYDAY - EMERGENCY
VHF RADIO PROCEDURE - DSC**
Use only when there is imminent and grave
danger to life or vessel

VESSEL NAME:

MMSI:

CALL SIGN:

Check radio is switched on at PANEL and SET.

Select Channel 16 and High Power.

Lift the cover on the red ***DISTRESS*** button and press the button through the countdown.

Wait 15 seconds. If there is no reply, press the transmit button on the handset and say SLOWLY:

•***MAYDAY, MAYDAY, MAYDAY***

•***THIS IS . . . Yacht - Name - 3 times***

CALL SIGN..... MMSI

•***MAYDAY . . . Yacht - Name***

CALL SIGN..... MMSI

•***MY POSITION IS . . . latitude and longitude, or a true bearing and distance from a known point. Don't guess.***

•***I AM . . . state the nature of distress***

•***I REQUIRE IMMEDIATE ASSISTANCE***

•***I HAVE . . . (number) of people on board***

•***INFORMATION . . . such as liferaft, flare fired, etc***

•***OVER - this means 'reply to me'***

Release Transmit button.

Listen on Channel 16. If you hear nothing repeat the call.

Available
on WEB



Covid impacts

- Site
- Committee Boat manning
- Safety Boat manning

Competitors must comply with legislation in force. Current advice available on RYANI website

<https://www.rya.org.uk/rya-regions/rya-ni/knowledge-base/Pages/COVID-19-Informaton.aspx>



Social Distancing influence

- Chevy Taxi work – considered outdoor – social distance where possible
- Safety Boat rescue – single helm or bubble crew – relaxed - reduce close contact within rescue
- Changing rooms & internal showers
External heated shower provided
- Early season –catering & bar – watch this space!



Follow up more info etc - generally just ask

Training can be provided on all aspects of club activity

Race Training

RO Training

Powerboat, Safety boat and RIB driving

Many other aspects

Follow up information – just ask

Links to explain the handicap systems

NHC for Cruisers

<https://www.rya.org.uk/SiteCollectionDocuments/technical/Web%20Documents/NHC/RuleandGuidance%202015.pdf>

Portsmouth Yardstick

<https://www.rya.org.uk/racing/Pages/portsmouthyardstick.aspx>

<https://www.rya.org.uk/racing/running-racing/portsmouth-yardstick#>

IRC rating rule

<https://ircrating.org/irc-certificate/what-is-irc/>



- Demo of the Strangford Lough regattas website
 - Search – where it is
<http://www.strangfordloughregattas.co.uk/index.php>
 - Competitor lists
 - Dates NoR SIs
 - Results



- Race organisation inc calendar – NoR & Sis
Calendar overview with club fit

- The whole volunteer team
 - Marks & committee boat/RO briefcase
 - RO
 - Safety Boat
 - Chevvy (Covid impact)
 - Results – assistance required



Your time for questions !

To be handled direct if possible

Follow up questions post conference to any of the club emails:-

Conference related – gp14edyc@talktalk.net

Training Related – edycprincipal@gmail.com

General club – edycsec@gmail.com

crossing the line

Crossing the line is controlled by our SIs

7.4 At the end of each round all boats must sail through the start line in the same direction that they started.

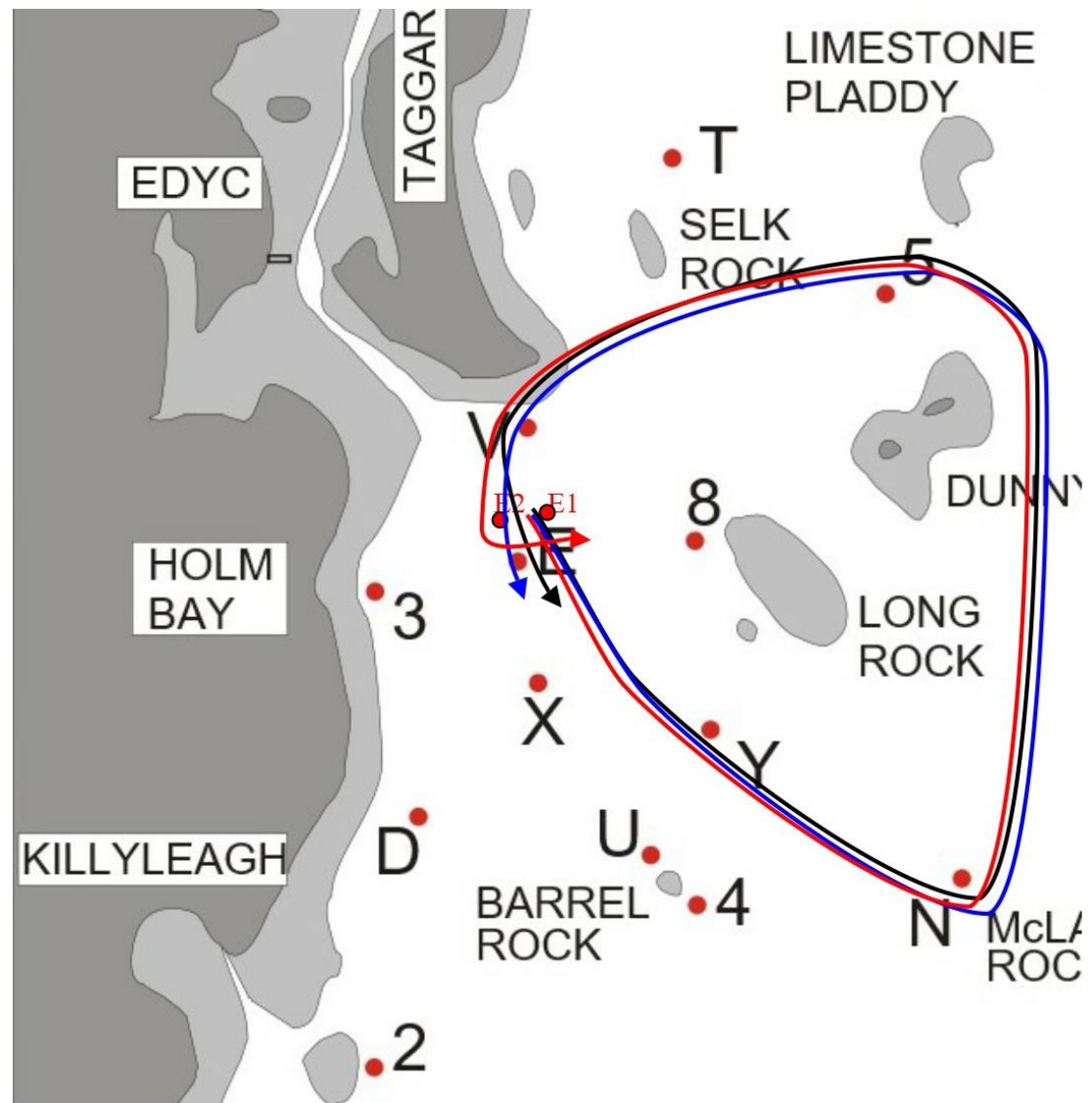
Finishing is defined by the RRS Definition – one of the early ones.

A boat finishes when , after starting, any part of her hull crosses the finishing line from the course side.

We may not change a definition.

The RO may adjust the line - especially in relation to finish.

To hook
or not to hook



Wind SE course chosen letters DC which is N 5 V
Call committee boat E
Line laid square to wind shown E1
Line moves due to tide or wind to E2

