

# EDYC CUPS and TROPHIES LIST Nov 2016

Some 14 trophies plus others with engraver

1

EDYC Cruising Event

A big cup with square handles

1999 Mississippi



2

EDYC National Flying Fifteen

First award 1968

Date on main cup

A tall skinny cup

Also used for something

2005 Catherine Molloy

2006 Don How

2007 Kim McCourt

2008 Richard Livingstone

2009 Michael Clarke

First award 1968

Seems has been used for most improved helm

Comment from Kim, Don and Richard



3

The Fools Penny Cup

Presented by the Lyness Family

1970

1998 Flip Me K Nash

comment from Keith

All I can suggest is that the Fools Penny Cup was for the Dinghy 2 PYS overall winner as I won it in 1998 and I have an engraved glass trophy. This would match the overall awards for the other classes (C1 - Hamilton Cup; C2 - Caterware Cup; L17 - Colville Salver; W - Wayfarer Salver; GP14 - McRobert Rosebowl).



4  
Cadet Trophy



5  
Strangford Lough Race Week  
Presented by Irish Spars & Rigging



6  
Lady Helms Trophy  
Large cup  
Other things on plate eg Crew's race  
2010 Rachael Reid



7  
Peat Marwick Challenge Cup  
1994 Calypso



8  
EDYC  
Cruiser Channel II Cup  
Bavarian Garages



This is being converted  
To NHC Cruiser II  
From Nov 16

9  
Manx Trophy  
Small  
1990



10  
L17 Two Day





11  
The Gary Wilson Cup  
2002 J Beaty



12 Petticrew Salver  
Single handed race



13  
A bell



14  
Captains Shield

Sees full and not recently awarded



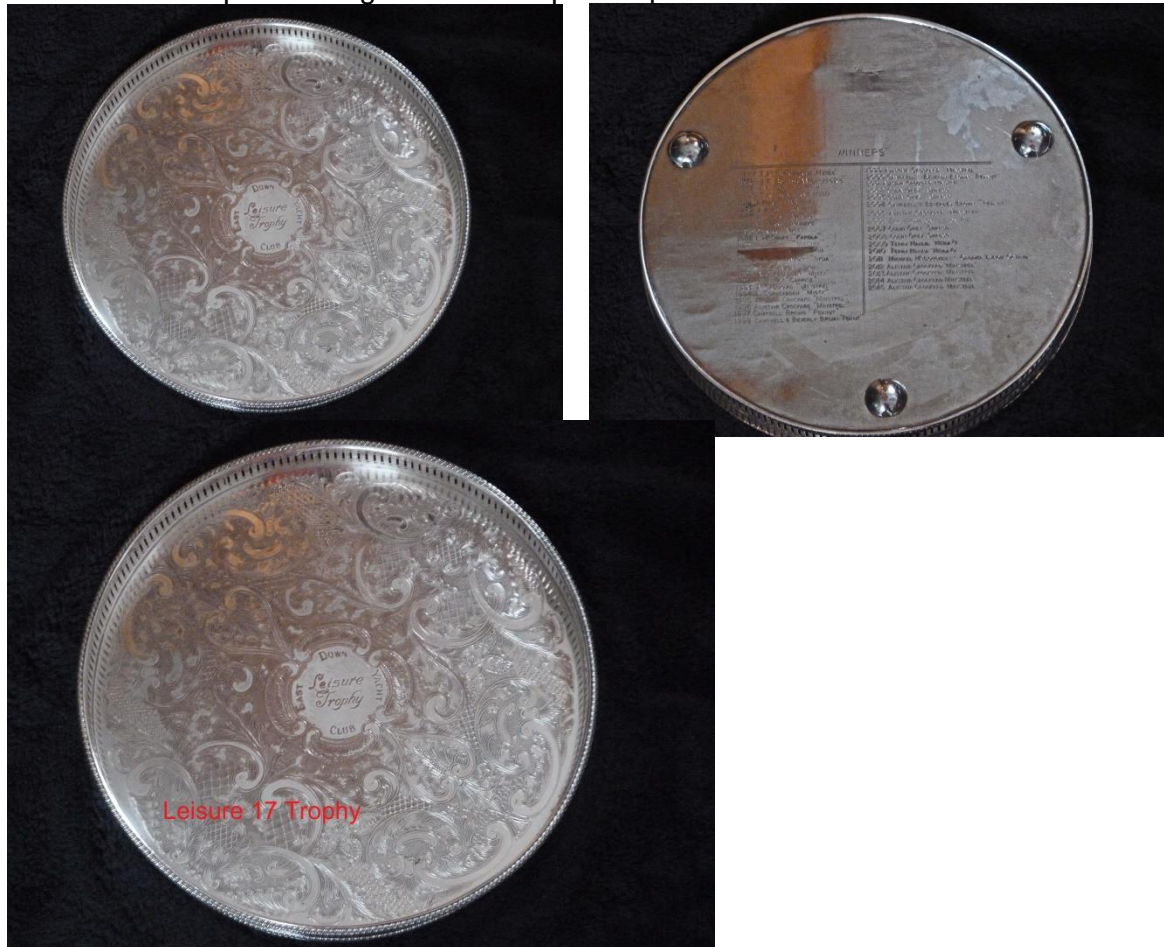
Next items already with engraver Nov 16

## 2. Colville Salver

2016 Alistair Crockard

Minstrel

L17 salver - two photos - high res on web post at present



## 3. McRobert Rosebowl

2016 quantum shadow

Simon Jeffery

- GP14



Also

**1. Hamilton Cup - a big cup - cruiser I**

2016 Stardust G McCullough & D Maxwell

Also the Wayfarer salver - smaller (has feet) - no photo

**4. Wayfarer Salver**

2016 Hart Beat ~~Gordon Jess as before seems we only put the boat on~~

**5. Mussen Cup**

2016 Derry ~ Londonderry ~ Doire Rebecca Jeffery Mussen Cup



New cup  
Murray Cup - youth - being engraved 2016 Grace Jennings



## Cup re-use change Nov 2016

Due to the Band on the plinth of the Caterware cup becoming full - a change had to be made  
- either an extra base and further band or re-assign an existing cup

Thus the full cup **Caterware Cup** is put aside  
And the four lines on the existing cup plate are  
Transcribed to a new Base plate and the cup put in to use again

**Caterware Cup- not supplied to engraver but another cup -the**

EDYC  
Cruiser Channel II Cup  
Bavarian Garages

**Channel II was an earlier handicap system**

**This has four lines of history on it - on a split/broken base plate - photo 8 above.**

**We want these four lines transcribed to a new half plate - plus we want this year's winner to be added.**

**However we want a line saying " NHC Cruiser II " in larger font separating or heading the new column or entry**

2016 Romparound Kim McCourt and Stephen Tate.

This avoids the Needs for a new plinth/base plus plate plus leave room and put a larger cup back in circulation

David Maxwell

23/11/16

**Update 06/11/2017 19:07**